

21a, Chester Street, Shrewsbury, SY1 1NX
£850 Per Month



21a, Chester Street, Shrewsbury, SY1 1NX

£850 Per Month

VIRTUAL TOUR AVAILABLE - Modern two bedroom first floor apartment situated within walking distance to Shrewsbury town centre and railway station. Includes gated parking space.

Available: Immediately

Description

Comprising: Communal entrance hall, private entrance hall, sitting area with kitchen including oven, hob, fridge/freezer and washing machine, bathroom with shower, double Bedroom. Stairs leading to further double bedroom with en-suite shower room. Secure gated parking. EPC D



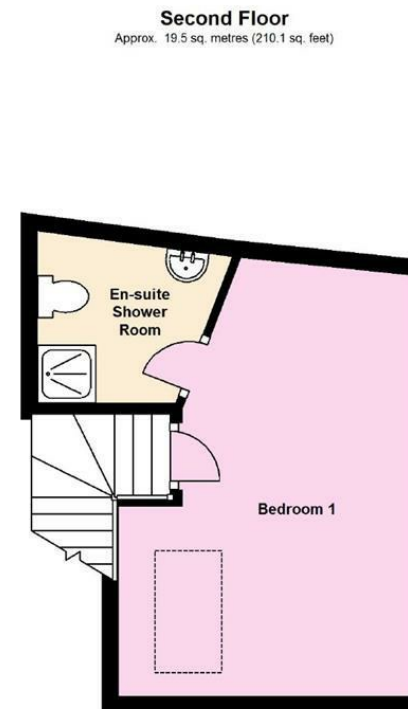
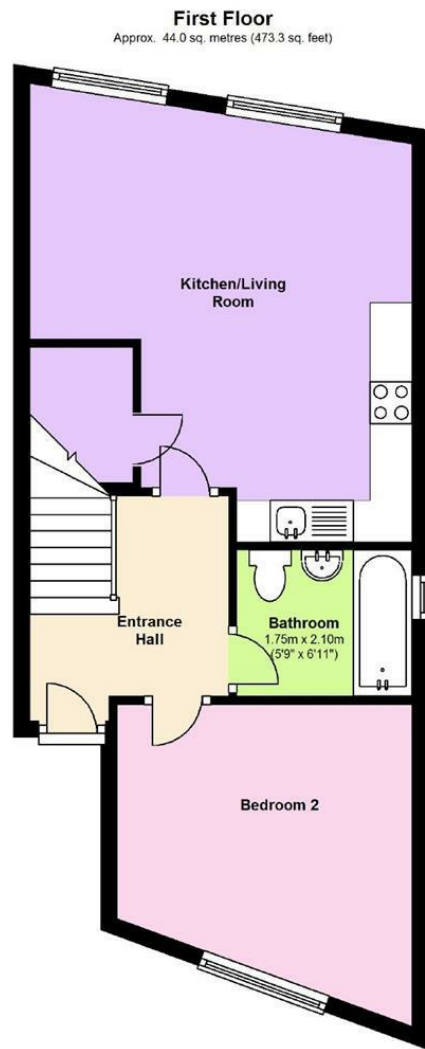
Unfurnished

Council Tax Band: B

Available: 18th December 2025

EPC: D

Floor Plans



Total area: approx. 63.5 sq. metres (683.4 sq. feet)

We accept no responsibility for any mistake or inaccuracy contained within the floorplan. The floorplan is provided as a guide only and should be taken as an illustration only. The measurements, contents and positioning are approximations only and provided as a guidance tool and not an exact replication of the property.
Plan produced using PlanUp.

These particulars, whilst believed to be accurate are set out as a general outline only for guidance and do not constitute any part of an offer or contract. Intending purchasers should not rely on them as statements of representation of fact, but must satisfy themselves by inspection or otherwise as to their accuracy. No person in this firm's employment has the authority to make or give any representation or warranty in respect of the property.